

Share Information (as of March 31, 2005)

Total no. of shares issued by **JALUX**: 20 million
 Total no. of shares issued (excluding treasury stock, etc.): 12,760,821
 No. of shareholders: 9,205

Major shareholders (ten largest)

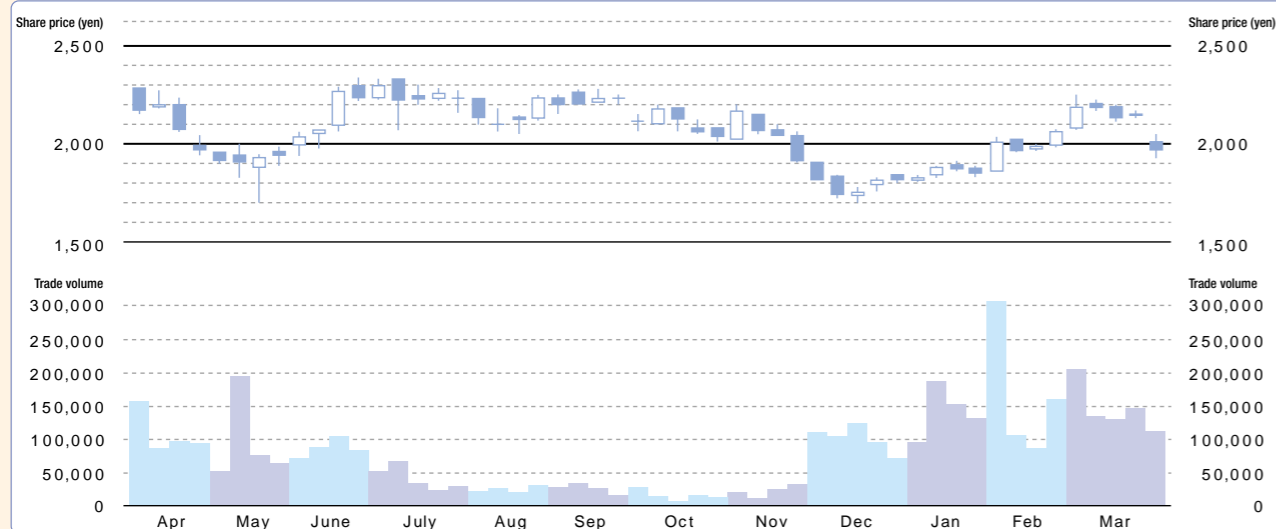
Name of shareholder	Shares held (thousand)	Voting rights
Japan Airlines Corporation	6,560	51.5
Tokio Marine & Nichido Fire Insurance Co., Ltd.	455	3.6
Nissay Dowa General Insurance Co., Ltd.	392	3.1
Mitsui Sumitomo Insurance Co., Ltd.	252	2.0
Aioi Insurance Co., Ltd.	189	1.5
Sompo Japan Insurance Inc.	189	1.5
JALUX Employees Shareholding Association	170	1.3
Airport Facilities Co., Ltd.	168	1.3
The Master Trust Bank of Japan, Ltd. (trust account)	136	1.1
Japan Trustee Services Bank, Ltd. (trust account)	91	0.7

Shareholder Memo (as of June 22, 2005)

End of accounting period: March 31
 Annual shareholders' meeting: June
 Shareholder registration date (for entitlement to annual meeting entry and dividend payment): March 31
 Minimum share-trading unit: 100 shares
 Transfer agent: UFJ Trust Bank, Ltd.
 1-4-3 Marunouchi, Chiyoda-ku, Tokyo
 Administration: UFJ Trust Bank, Ltd.
 7-10-11 Higashi-suna, Koto-ku, Tokyo
 ☎0120-232-711
 Agent: UFJ Trust Bank branches nationwide
 Nomura Securities Co., Ltd. headquarters as well as branches and offices nationwide
 Public announcements: Please refer to the **JALUX** website

(Information relating to balance sheets and income statements will be provided on our website at <http://www.jalux.com>)

Share price and trade volume trends (April 1, 2004 to March 31, 2005)



Company Overview (as of March 31, 2005)

Trade name: **JALUX** Inc.
 Established: March 28, 1962
 Capitalization: 2,558,550,000 yen
 Number of employees: 1,590 (including 955 at consolidated subsidiaries)
 Domestic airport shops: 93 shops in 24 airports including Chitose, Haneda, Osaka, and Fukuoka
 Domestic subsidiaries: JAL-DFS Co., Ltd. (duty-free sales)^{*1}
 JALUX Airport Inc. (airport shop management business)^{*1}
 Overseas offices: JALUX EUROPE Ltd. (London and Vienna)^{*1}
 JALUX AMERICAS, Inc. Los Angeles)^{*1}
 JALUX ASIA Ltd. (Bangkok & Hong Kong)^{*1}
 JALUX HAWAII, Inc. (Honolulu)
 JALUX Inc. Shanghai Representative Office (Shanghai)

*1. Consolidated subsidiary.

*2. JAL/DFS Duty Free Shoppers Co., Ltd. has changed its name to JAL-DFS Co., Ltd.

List of directors (as of June 22, 2005)

President & CEO	Toshiki Okazaki
Managing director	Yoshikazu Kato
Managing director	Yoshiyuki Tsutsumi
Managing director	Kazuro Aoyama
Managing director	Hiroaki Nai
Managing director	Toshio Sakamoto
Managing director	Sumio Shionoya
Managing director	Hiroshi Iijima
Managing director	Yuji Tsukahara
Director	Ryoji Yoshida
Director	Kenji Ichikawa
Director (External)	Kimio Hiroike
Director (External)	Toshihiro Ishii
Director (External)	Hiroyuki Kato
Auditor	Tsunehiko Nakano
Auditor (External)	Yasunaka Furukawa
Auditor (External)	Haruka Nishimatsu

Based on the corporate philosophy of "Contributing to Tomorrow," the **JALUX** group acknowledges its social responsibility as a good corporate citizen. With a strong sense of ethics, we aim to provide goods and services to satisfy the customer at all times, and become a corporate group contributing to society in a broad sense.

Disaster recovery support



Relief supplies for the Niigata Chuetsu earthquake

In October 2004, receiving reports of an earthquake, we transported around 8,300 drinks, noodles, retort foodstuffs, and other initial relief supplies to victims at the disaster site on a JAL special flight.

Fund-raising support for Sumatra offshore earthquake and tsunami

At the time of the disaster in December 2004 we carried out emergency fund-raising activities in our BLUE SKY shops, raising money throughout Japan from customers as well as from employee and corporate donations. We donated the funds raised to the Japan Committee for UNICEF in order to help children in the disaster locations.

Regarding disaster relief support activities generally, JAL group takes initiatives to exploit the unique strengths of the group by participating in such areas as special flight transport, support for transport of goods and transport of aid workers, and volunteer activities.

Sustained social support

JALUX makes regular financial donations to the Japan Committee for UNICEF in support of children throughout the world.

In December each year we hold a charity sale and donate part of the proceeds to JAL group volunteer activity funds.

JALUX employees cooperate in donations to the Minsai Center's Darunee Scholarship Fund to support elementary school children in Laos, where school attendance rates are low.

Once again, while expressing our sympathies for disaster victims, we thank everyone for your warm cooperation with funding activities.