

Share Information

(as of March 31, 2006)

Authorized shares : 20,000,000  
 Outstanding shares : 12,760,681  
 No. of shareholders : 10,802

Major shareholders (ten largest)

Name of shareholder	Shares held (thousand)	Voting rights (%)
Japan Airlines Corporation	6,560	51.5
The Tokio Marine and Nichido Fire Insurance	455	3.6
Nissay Dowa General Insurance Co., Ltd.	392	3.1
Mitsui Sumitomo Insurance Co., Ltd.	252	2.0
Aioi Insurance Co., Ltd.	189	1.5
Sompo Japan Insurance Inc.	189	1.5
Airport Facilities Co., Ltd.	168	1.3
JALUX Employees Shareholding Association	152	1.2
HSBC Bank PLC A/C Atlantis Japan Growth Fund	97	0.8
The Master Trust Bank of Japan, Ltd(trust account)	87	0.7

Shareholder Memo

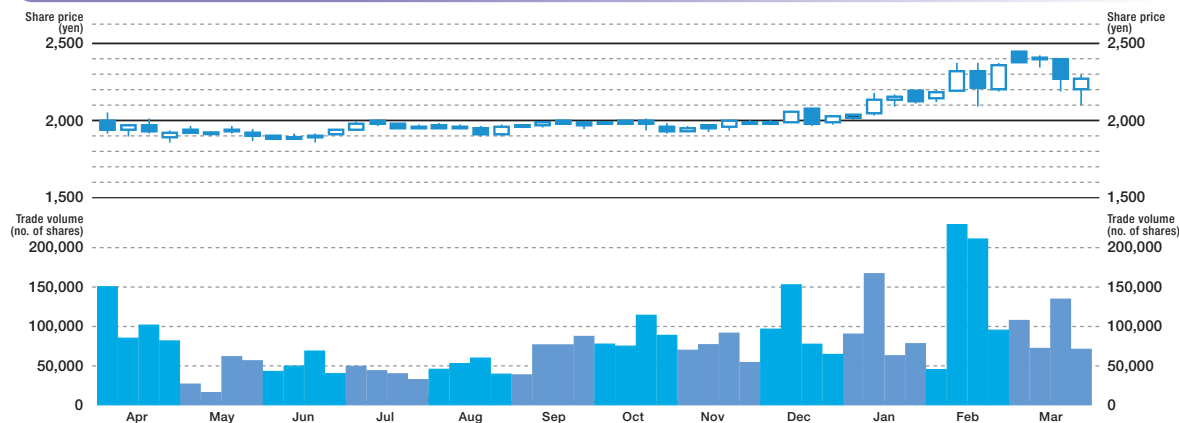
(as of June 23, 2006)

- Fiscal year : April 1 to March 31
- Annual shareholders' meeting : June
- Shareholder registration date (for entitlement to annual meeting entry and period-end dividend payment) : March 31
- Minimum share-trading unit : 100 shares
- Shareholder register manager : Mitsubishi UFJ Trust and Banking Corporation 1-4-5 Marunouchi, Chiyoda-ku, Tokyo
- Contact and postal address : UFJ Trust Bank, Ltd.7-10-11 Higashi-suna, Koto-ku, Tokyo Tel. 0120-232-711
- Agent : Mitsubishi UFJ Trust Bank branches nationwide Nomura Securities Co., Ltd. headquarters as well as branches and offices nationwide
- Public announcements : Please refer to the JALUX website

Information relating to balance sheets and income statement will be provided on our website at <http://www.jalux.com>

Share price and trade volume trends

(April 1, 2005 to March 31, 2006)



Company overview

(as of March 31, 2006)

Trade name	<b>JALUX Inc.</b>
Established	March 28, 1962
Capitalization	2,558,550,000 yen
Number of employees	1,656 (including 1,022 at consolidated subsidiaries)
Domestic airport branches	93 shops in 25 airports including Narita, Haneda, Kansai, and Fukuoka
Domestic subsidiaries	JAL-DFS Co., Ltd. (duty-free sales)*1 JALUX Airport Inc. (airport shop management)*1
Overseas subsidiaries	JALUX EUROPE Ltd. (London, Vienna)*1 JALUX AMERICAS, Inc. (Los Angeles)*1 JALUX ASIA Ltd. (Bangkok, Hong Kong)*1*2 JALUX HAWAII, Inc. (Honolulu) JALUX SHANGHAI Co., Ltd. (Shanghai)

\*1. Consolidated subsidiary.  
 \*2. JALUX HONG KONG Co., Ltd. is planned for launch on July 2006

Executives

(as of June 23, 2006)

President & CEO	Toshiki Okazaki
Senior managing director	Yoshiyuki Tsutsumi
Managing director	Kazuro Aoyama
Managing director	Hiroaki Nai
Managing director	Toshio Sakamoto
Managing director	Sumio Shionoya
Managing director	Hiroshi Iijima
Managing director	Yuji Tsukahara
Director	Kenji Ichikawa
Director	Toshiro Yamaguchi
Director	Kaneo Maki
Director	Tokuhisa Asayama
Director	Yoshio Matsushita
Director	Masayuki Abiko
Director (external)	Kimio Hiroike
Director (external)	Yoshihiro Omura
Director (external)	Fudeji Hama
Auditor	Ryoji Yoshida
Auditor	Tsunehiko Nakano
Auditor (external)	Yasunaka Furukawa
Auditor (external)	Atsuro Nishi

Please make use of the JALUX website.

[www.jalux.com](http://www.jalux.com)



Investor information  
 (Japanese)



Investor information  
 (English)



Please refer to the English version of the JALUX website for Financial results and Materials for briefing, the FACT BOOK, and other information.