

Share Information / Share Price and Trade Volume Trends

Share Information (as of March 31, 2007)

Authorized shares : 20,000,000
Outstanding shares : 12,775,000
No. of shareholders : 10,803

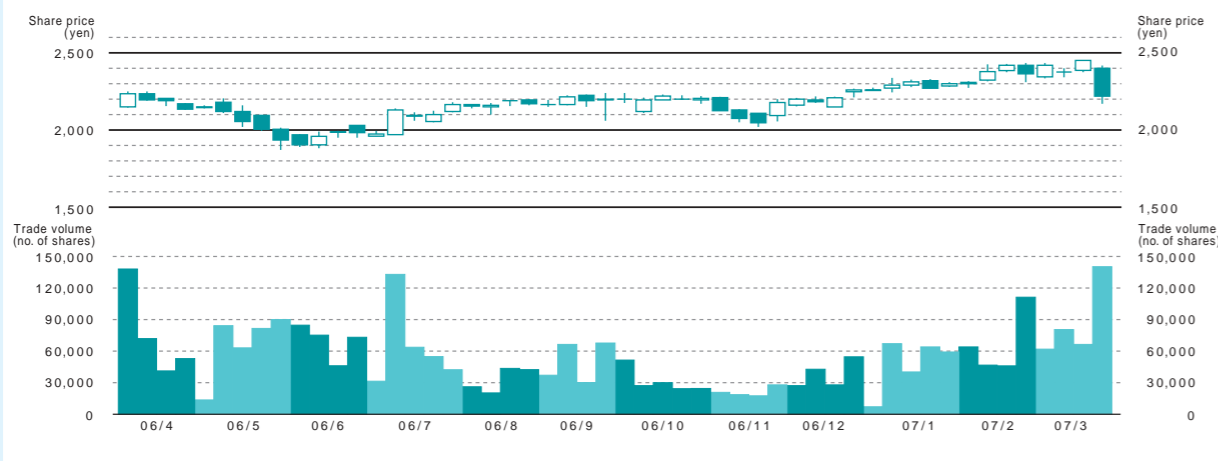
Major shareholders (ten largest)

Name of shareholder	Shares held (thousand)	Shareholding ratio
Sojitz Corporation	3,832	30.0%
Japan Airlines Corporation	2,727	21.4%
The Tokio Marine & Nichido Fire Insurance Co., Ltd.	455	3.6%
Nissay Dowa General Insurance Co., Ltd.	392	3.1%
Mitsui Sumitomo Insurance Co., Ltd.	252	2.0%
Aiol Insurance Co., Ltd.	189	1.5%
Sompo Japan Insurance Inc.	189	1.5%
Airport Facilities Co., Ltd.	168	1.3%
The Master Trust Bank of Japan, Ltd. (trust account)	147	1.2%
JALUX Employees Shareholding Association	144	1.1%

Shareholders' memo (as of June 22, 2007)

Fiscal year : April 1 to March 31
Annual shareholders' meeting : June
Shareholder registration date : March 31
(for entitlement to annual meeting entry and period-end dividend payment)
Minimum share-trading unit : 100 shares
Shareholder's register manager : Mitsubishi UFJ Trust and Banking Corporation 1-4-5 Marunouchi, Chiyoda-ku, Tokyo
Contact and postal address : Mitsubishi UFJ Trust and Banking Corporation 7-10-11 Higashi-suna, Koto-ku, Tokyo Tel. 0120-232-711
Agent : Mitsubishi UFJ Trust and Banking Corporation branches nationwide Nomura Securities Co., Ltd. headquarters as well as branches and offices nationwide
Public announcements : Please refer to the **JALUX** website

Share Price and Trade Volume Trends (April 1, 2006 to March 31, 2007)



Company Overview / Executives

Company Overview (as of March 31, 2007)

Name : **JALUX Inc.**
Stock code : 2729 (TSE 1st section)
Established : March 28, 1962
Capitalization : 2,558, 550,000 yen
Employees : 1,837 (including 1,204 at consolidated subsidiaries)
Domestic airport shops : 98 shops in 25 airports including Narita, Haneda, Kansai, and Fukuoka
Domestic subsidiaries : JAL-DFS Co., Ltd. (duty-free sales)*
JALUX Airport Inc. (airport shop management business)*
JY Fashion Create Inc.
Overseas subsidiaries : JALUX EUROPE Ltd. (London, Vienna)*
JALUX AMERICAS Inc. (Los Angeles)*
JALUX HAWAII Inc. (Honolulu)
JALUX ASIA Ltd. (Bangkok)*
JALUX ASIA SERVICE Ltd. (Bangkok)*
JALUX HONG KONG Co., Ltd. (Hong Kong)*
JALUX SHANGHAI Co., Ltd. (Shanghai)*

*Consolidated subsidiary

Executives (as of June 22, 2007)

Chairman of the Board	Hiroshi Tomomori
President & CEO	Toshiki Okazaki
Senior Managing Director	Toshio Sakamoto
Senior Managing Director	Sumio Shionoya
Managing Director	Hiroshi Iijima
Managing Director	Kenji Ichikawa
Managing Director	Yasumasa Onuki
Director	Toshiro Yamaguchi
Director	Kaneo Maki
Director	Tokuhiisa Asayama
Director	Yoshio Matsushita
Director	Masayuki Abiko
Director	Masayuki Yamamoto
Director	Seigi Miyana
Director	Shinichi Tajima
Director	Yutaka Takeda
Director (External)	Fudeji Hama
Director (External)	Yoshihiro Omura
Auditor	Ryoji Yoshida
Auditor	Tsunehiko Nakano
Auditor (External)	Atsuro Nishi
Auditor (External)	Teruhisa Ishizawa

Gift Certificates for Shareholders

JALUX will present shareholders possessing 100 shares or above with **JALUX** product gift certificates twice a year, as of March 31 and September 30, according to the following formula:

Number of Shares	Number of Gift Certificates		Amount per year (yen)
	End of Sept.	End of Mar.	
100-499	2	2	4,000
500-1,999	4	4	8,000
2,000-3,999	7	7	14,000
4,000-5,999	10	10	20,000
6,000-9,999	12	12	24,000
10,000 or more	14	14	28,000

About gift certificates

JALUX gift certificates are valued at 1,000 yen each and are valid for one year. They can be used with **JALUX** mail order catalogs or at airport shops.

Where to use gift certificates

You can use gift certificates at "JAL World Shopping Club", "Blue Sky", "JAL-DFS", and "Plaza Wien JALUX".

*Please note you cannot use gift certificates for Internet shopping, in-flight sales, or at "JAL Plaza Yurakucho", "NAA & JAL-DFS (Narita Airport Terminal 1)".

For more information, please see www.jalux.com/ir

You can use them
for catalog shopping!

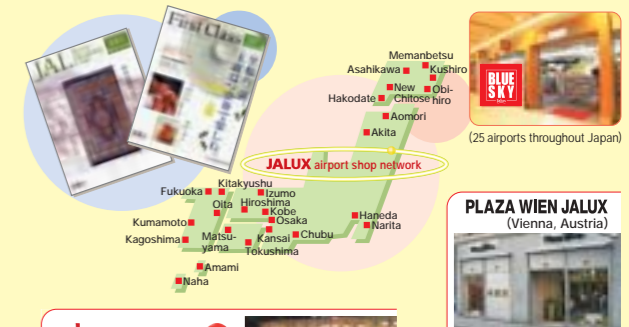
Mail-order catalog

JAL World Shopping Club

You can use them
at shops!

Airport shops throughout Japan

BLUE SKY



JAL DUTYFREE
International airline
duty-free shops in
Narita Airport Terminal 2



You can use gift certificates
at "JAL-DFS" and "Plaza Wien
JALUX" from January 2007.

*Please note the shareholder courtesy system (including shop locations) may be changed due to various factors.